

BROKER BRIEF

July 2021

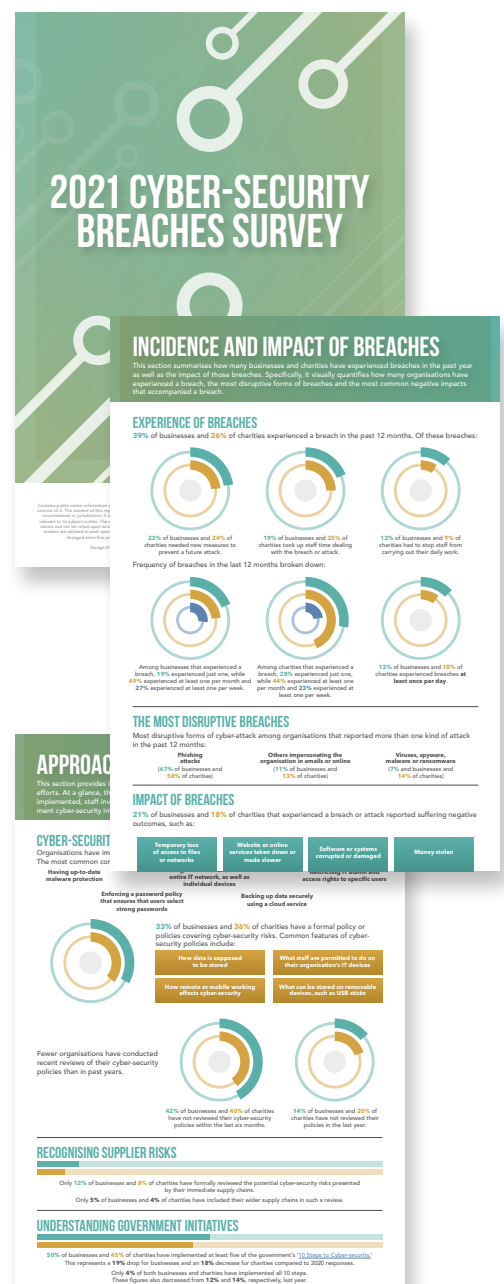
SUMMARISING THE 2021 CYBER SECURITY BREACHES SURVEY

Each year, the Department for Digital, Culture, Media & Sport commissions an annual Cyber Security Breaches Survey as part of the National Cyber Security Programme. This report is intended to help organisations understand current cyber-security trends so they can assess their risks and implement appropriate precautions.

The 2021 edition of this survey included numerous key results both businesses and charities must consider in the year to come. In the past year, 39 per cent of businesses and 26 per cent of charities have experienced a data breach or cyber-attack. These incidents can have major ramifications, including lost or stolen data, business interruption, costly fines under the General Data Protection Regulation and reputational damage.

It's worth noting that the coronavirus pandemic has had a significant impact on cyber-security. COVID-19 forced many organisations to begin conducting operations remotely and making greater use of technology. Remote workers are often seen as easy targets for cyber-criminals, and according to survey results, many organisations have not taken the necessary steps to protect themselves and their employees from these new or enhanced cyber-threats. In fact, 2021 saw a decrease in the rates of both businesses and charities that regard cyber-security as a high priority. The rate for businesses was down from 80 per cent in 2020 to 77 per cent, and the rate for charities dropped from 74 per cent to 68 per cent.

This [document](#) summarises key statistics collected within the 2021 survey on various subjects, such as how organisations managed data breaches and various approaches to cyber-security in the past year. Organisations across all sectors should take the time to review these results and consider what steps may be necessary to protect themselves.



NEW AND NOTEWORTHY



[Video: International Travel Restrictions in England](#)

Audience: Employers, individuals

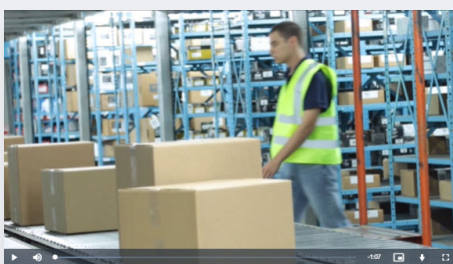
The new green, amber and red lists established by the government define risk levels and travel restrictions for various countries and territories. Originally established in May 2021, these categories are important for people travelling for both business or holiday to understand. Although there are no longer any quarantine requirements for those arriving from countries or territories on the green list, rules for the amber and red lists are more complicated. This video can help travellers better understand this new system.



[Employee Well-being Insights: How to Attract Top Remote Talent](#)

Audience: Employers

Remote work is expected to be an ongoing part of regular options for many organisations. Employers may find that making positions remote allows them to access a broader talent pool. Since various workplace technology solutions can enable employees occupying many different positions to work from anywhere in the world. This opportunity means that employers may no longer be limited to candidates located in close geographic proximity to a physical workplace. With these things in mind, it's important to consider how recruiting processes must change so that organisations can find the best available talent.



[Video: Ergonomics in the Workplace](#)

Audience: Employers

Ergonomics is the process of analysing tasks and making them fit properly with an employee's capabilities and limitations. While good ergonomics can help keep employees in the workplace healthy, poor ergonomics can lead to a variety of issues, such as musculoskeletal disorders. The subject of ergonomics is not only important for tasks that might be considered physically taxing, such as those involving manual handling and outdoor work. However, even those who spend most of their day sitting at a desk can experience serious health issues due to poor ergonomics. This video provides guidance for employers for utilising ergonomics and keeping employees productive and healthy.

NEW IN JUNE

- [Regulatory Update: Government Hopes to End Unsafe Cladding](#)
- [Employee Well-being Insights: Using Technology in Learning and Development](#)
- [Well-being Toolkit— Musculoskeletal Disorders](#)
- [Risk Insights: What Are Performance Bonds?](#)
- [Employee Well-being Insights: Engaging Employees With an Organisational Mission](#)
- [Video: Diabetes Awareness Week](#)
- [Employee Well-being Insights: How to Attract Top Remote Talent](#)
- [Video: Men's Health Week](#)
- [Broker Brief June 2021](#)
- [News Brief: England Delays Next Stage of Reopening Process](#)
- [Loss Control Questionnaire: Supermarkets](#)
- [Loss Control Questionnaire: Food Suppliers](#)
- [Social Media Cheat Sheet June 2021](#)
- [Video: Ergonomics in the Workplace](#)
- [Broker Bulletin July 2021](#)
- [Commercial Insurance Profile July 2021](#)
- [Motor Trade Commercial Insurance Profile 3rd Quarter 2021](#)
- [Charity Commercial Insurance Profile 3rd Quarter 2021](#)
- [Live Well, Work Well Newsletter July 2021](#)
- [HSE Safety Cornerstones July 2021](#)
- [Cyber-risks and Liabilities July/August 2021](#)
- [Safety Focused July 2021](#)
- [Personal Lines Perspectives July 2021](#)
- [News Brief: Matt Hancock Resigns as Britain's Health Secretary](#)
- [Video: International Travel Restrictions in England](#)

MAY'S TOP 10 DOCUMENTS

- [Commercial Driver Handbook](#)
- [Commercial Insurance Profile July 2021](#)
- [Commercial Insurance Profile June 2021](#)
- [Well-being Toolkit— Musculoskeletal Disorders](#)
- [News Brief: England Delays Next Stage of Reopening Process](#)
- [Cyber-risks and Liabilities July/August 2021](#)
- [Broker Brief June 2021](#)
- [Risk Insights: What Are Performance Bonds?](#)
- [2021 Commercial Property Insurance Market Outlook](#)
- [Loss Control Questionnaire: Food Suppliers](#)